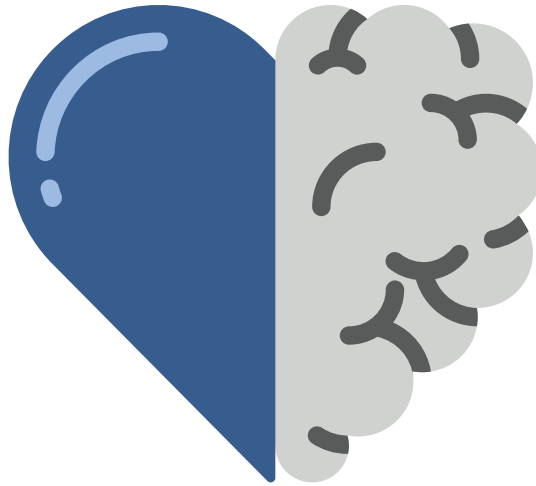


A Beautiful Mind: Inspiring Mental Wellness for the Aging Population



Hybrid Conference
generously sponsored by:



305 WEST END
ASSISTED LIVING

Manhattan, New York City
or Via the Zoom Platform

AGING (i)fe CARE®
A S S O C I A T I O N
— NEW YORK CHAPTER —

proudly announces an important conference featuring
cutting-edge speakers & topics:

Tuesday, NOVEMBER 16th, 2021

8:30am to 4:30pm

305 West End Avenue,

New York, NY 10023

and via the Zoom Platform

5 CEUs NYSED/SW, NJ SW Board of Examiners & NACCM

A Beautiful Mind: Inspiring Mental Wellness for the Aging Population
Tuesday, NOVEMBER 16th, 2021 - 8:30am to 4:30pm
305 West End Avenue, New York, NY 10023
and via the Zoom Platform

Our 2021 Conference, [A Beautiful Mind: Inspiring Mental Wellness for the Aging Population](#), has generated great interest and we expect a robust turnout of Aging Life Care Managers® and other health care providers from NY and across the country. It will be held on November 16th, 2021, at the conveniently located [305 West End](#) in Manhattan, NYC and via the Zoom platform.

The conference is designed to explore the concepts of mental wellness and resiliency among older populations, including our veterans. Attendees will develop an understanding of holistic treatment models in the field of psychiatry and how the role of new care models including telemedicine is changing the field. Your corporate sponsorship will support Aging Life Care Professionals to broaden their knowledge base as it relates to the mental health of our aging population. Plan to join us on November 16th. We appreciate your participation!

[Who attends the NYALCA Annual Conferences?](#)

Attendees have included over 200 professionals who provide a wide range of services throughout the United States, with a concentration in the tri-state region. These services can include assessments, developing plans of care, coordination and recommendation of services, counseling, home care, psychotherapy, placement and guardianship to the rapidly growing senior population and their families. The NYALCA conference is a unique educational and networking opportunity for professionals who work directly with seniors and their families, as well as those who are interested in learning more about aging issues and solutions.

All onsite tickets subject to virtual accommodation based on unforeseen COVID-19 safety issues. No refunds.

JOIN US

A Beautiful Mind: Inspiring Mental Wellness for the Aging Population
Tuesday, NOVEMBER 16th, 2021 - 8:30am to 4:30pm
305 West End Avenue, New York, NY 10023
and via the Zoom Platform

SPONSORING?

Who sponsors at the NYALCA Annual Conferences?

Companies and organizations whose products and services are geared toward assisting the elderly and disabled. Sponsors will have access to cutting edge leaders and decision-makers on the forefront of aging. Past sponsors have been delighted with the caliber of attendees and referrals received from exhibiting at NYALCA Conferences. They consistently remark that their presence at the NYALCA conferences improves their access and visibility within the professional community and has led to increased knowledge of and use of their services.

Register by October 6th 2021 to be listed as an “Initial Sponsor” on the NYALCA chapter website.

Sponsorship opportunities limited to 6 onsite and 4 virtual sponsors offering unique goods & services that enhance the care of clients & our professional practices. All onsite exhibits subject to virtual accommodation based on unforeseen COVID-19 safety issues.

Interested in sponsoring?

For information contact: (646) 645-9663 or alcanyevents@gmail.com

Cutting Edge Speakers



Drew Barnes, LMSW, PCTIC Coordinator

Drew Elizabeth Barnes is a licensed social worker, certified care manager, an aging life care professional, and an artist currently based in North Carolina. Her experience spans working in both public and private sectors, with a focus on serving the homebound community within New York City. She has worked for Concerts in Motion (CiM) since 2017, now virtually, and is currently the Person-Centered Trauma Informed Care (PCTIC) Coordinator. In this role, she

provides on-going PCTIC trainings with the musician roster, and provides feedback to staff and musicians in order to maintain alignment with the PCTIC approach so that we are equipped to serve Holocaust survivors, recipients with Dementia, and other vulnerable populations. Drew also leads CiM's community outreach and oversees all relationships with CiM's agency partners throughout NYC and beyond.



Cheryl Nolte, LMSW, Caregiver Support Program Social Worker

Cheryl Nolte joined the Caregiver Support Program in January of 2021. Cheryl has been with the VA for 10 years, working at the Veterans' Crisis Line, Mental Health Intensive Case Management (MHICM), Patient Aligned Care Team (PACT) and creating the Financial Case Management position at the Canandaigua VAMC as a new position. Cheryl has worked in the Rochester, NY community for almost 30 years working in Geriatrics. She was an Eldersource

Case Manager and was one of the first to receive her certification in Geriatrics from St. John Fisher College through a collaboration with Lifespan. She has enjoyed working with special needs populations including: Geriatric Case Management, individuals with Dementia and their caregivers, Traumatic Brain Injury, and medically complex individuals in home care.



Janhavi Wadhvani, Founder of Self-Sense, Meditation and Wellness Coach

Having taught yoga, breathwork and meditation for over 21 years, Janhavi Wadhvani is experienced in working with people of multitudinal backgrounds in the US and abroad. During the pandemic, she increased her focus on working with the elderly and vulnerable participants which inspired her formation of 'Self-Sense'. By training with the Harvard affiliated program to gain a deeper foundation of scientific evidence behind body and mind

practices, she currently teaches programs for elders at facilities and centers in the Greater Boston area. Janhavi also offers individuals specialized programs on a one-to-one basis, offering tools based on specific needs. She has taught at multiple institutes and holds a Master's from the Institute for Technology and Management in Mumbai, India.



Raymond Zakhari, DNP, EdM, NP

Raymond Zakhari, DNP, EdM, NP, has a diverse clinical background ranging from intensive care to medical house calls. He began his career at Duke University Medical Center in the cardiothoracic ICU and made his way back to the Northeast as a traveling ICU and ED nurse. In 2009 he founded Metro Medical Direct, the first concierge, nurse practitioner-owned, medical/psychiatric house call and tele-health practice in New York City. Dr. Zakhari was also

trained in sex therapy at the New York University School of Medicine/Langone Medical Center by Dr. Virginia Sadock (co-author of The Synopsis of Psychiatry). Dr. Zakhari is appointed to the staff of NewYork-Presbyterian Hospital, Department of Internal Medicine in Psychiatry at the Payne Whitney Clinic and provides consultative services as a Sexual Assault Forensic Examiner. He is a former officer of the New Jersey Air National Guard and has deployed in support of Operation Iraqi Freedom.

Schedule of Events

8:30AM - 9:15AM REGISTRATION/ CONTINENTAL BREAKFAST
NETWORKING/ MEET OUR SPONSORS, ONLINE
PRESENTATIONS

9:15AM - 9:30AM WELCOMING REMARKS BY:



305 WEST END
ASSISTED LIVING

Dana Reisch, LMSW, CMC (Conference Chair), Anne Sansevero, RN, MA, GNP,
CCM (President, NY ALCA®)

KEYNOTE SPONSOR WELCOME FROM MELISSA SHEEHAN,
DIRECTOR OF BUSINESS DEVELOPMENT, THE BRISTAL
ASSISTED LIVING AND 305 WEST END ASSISTED LIVING

9:30AM - 11:00AM MORNING KEYNOTE PRESENTATION – FINDING CALM
THROUGH BREATHWORK AND MEDITATION

Janhavi Wadhvani is experienced in working with people of multitudinal backgrounds in the US and abroad and has taught yoga, breathwork and meditation for over 21 years. During the pandemic, she increased her focus on working with the elderly and vulnerable participants which inspired her formation of 'Self-Sense'.

11:00AM - 11:30PM EXHIBIT VISITING. TOUR, REFRESHMENT BREAK,
ONLINE SPONSOR PRESENTATIONS

11:30AM - 12:30PM MID-DAY PRESENTATION – RECLAIMING MEMORIES THROUGH
MUSIC

Drew Elizabeth Barnes is licensed social worker, certified care manager, managing life care professional, and an artist currently based in North Carolina. Her experience spans working in both public and private sectors, with a focus on serving the homebound community within New York City.

12:30PM - 1:15PM CONCERTS IN MOTION, LUNCH BREAK, EXHIBIT VISITING AND
ONLINE SPONSOR PRESENTATIONS

1:15PM - 2:30PM EARLY AFTERNOON PRESENTATION – VETERAN SERVICES:
PROMOTING WELLNESS AND BALANCE IN VETERANS
HEALTH CARE

Cheryl Nolte, LMSW, Caregiver Support Program Social Worker joined the Caregiver Support Program in January of 2021. Cheryl has been with the VA for 10 years, working at the Veterans' Crisis Line, Mental Health Intensive Case Management (MHICM), Patient Aligned Care Team (PACT) and creating the Financial Case Management position at the Canandaigua VAMC as a new position. Cheryl has worked in the Rochester, NY community for almost 30 years working in Geriatrics.

2:30PM - 3:00PM EXHIBIT VISITING, ONLINE SPONSOR PRESENTATIONS

3:00PM - 4:15PM LATE AFTERNOON PRESENTATION – IDENTIFYING AND
MANAGING MOOD DISORDERS IN GERIATRIC CLIENTS

Dr. Raymond Zakhari has a diverse clinical background ranging from intensive care to medical house calls. He began his career at Duke University Medical Center in the cardiothoracic ICU and made his way back to the Northeast as a traveling ICU and ED nurse. In 2009 he founded Metro Medical Direct, the first concierge, nurse practitioner-owned, medical/psychiatric house call and tele-health practice in New York City.

4:15PM - 4:25PM CLOSING REMARKS

4:30PM - ONWARD SIGN OUT AND FINAL TOURS

Pending for 5 NYSED/NJ SW and NACCM CEUs

Attendees MUST be signed-in for the whole presentation and submit the evaluation form that will be given to you onsite if in-person OR emailed to you if attending via the Zoom Platform after the meeting. Aging Life Care Association SW CPE is recognized by the New York State Education Department's State Board for Social Work as an approved provider of continuing education for licensed social workers, #0166. This program is approved for 5 contact hours by the National Academy of Certified Care Managers (NACCM). Based on the regulations of the NYSED and NJ Board of Social Work Examiners CEU approval, all participants who are seeking social work CEUs must sign-in and sign out for the entire presentation as well as submit an evaluation form to obtain the full 5 CEU hours.

Onsite and Virtual Sponsor Opportunities NY ALCA Conference 2021

\$3,500 ONSITE SPONSOR PACKAGE (6 TABLES AVAILABLE) - all onsite sponsorships subject to virtual option based on changing COVID protocols. No refunds.

- Exhibit table with two (2) chairs and organization identification signs
- Recognition in conference program
- Exclusive pod engagement with onsite attendees – COVID safe protocols
- Continental breakfast/lunch for two (2) exhibitors
- Distribution of marketing materials on all tables at venue
- Sponsor to receive list of online and in-person conference attendees
- 5 Minute Slide Deck Presentation and virtual handouts for Zoom attendees
- Signage on all floors of event and on Zoom platform

\$1,000 2 VIRTUAL MID-MORNING AND MID-AFTERNOON BREAK SPONSORS AVAILABLE

- 2 ZOOM PLATFORM tickets – No in person attendance with this sponsorship
- 10 Minute Presentation during BREAKS BETWEEN SPEAKERS – Zoom attendees present online
- Distribution of marketing materials on all tables at venue
- Signage on all floors of event and prominent display on Zoom platform
- Recognition in conference program
- Virtual handouts for Zoom attendees
- Sponsor to receive list of online and in-person conference attendees

\$1,000 1 VIRTUAL EARLY MORNING SPONSOR

- 2 ZOOM PLATFORM tickets - No in person attendance with this sponsorship
- 10 Minute Presentation BEFORE PROGRAMMING BEGINS – Zoom attendees present online
- Distribution of marketing materials on all tables
- Signage on all floors of event and prominent display on Zoom platform
- Recognition in conference program
- Virtual handouts for Zoom attendees
- Sponsor to receive list of online and in-person conference attendees

\$1,000 1 VIRTUAL MID-DAY SPONSOR

- 2 ZOOM PLATFORM tickets - No in-person attendance with this sponsorship
- 10 Minute Presentation during MID-DAY – Zoom attendees present online
- Distribution of marketing materials on all tables at venue
- Signage on all floors of event and prominent display on Zoom platform
- Recognition in conference program
- Virtual handouts for Zoom attendees
- Sponsor to receive list of online and in-person conference attendees

Deadline for sponsorships and insurance certificates: Monday, October 6th, 2021

Sponsor Information

EXHIBIT DATE: November 16, 2021

EXHIBIT LOCATION: 305 West End Avenue,
New York, NY 10023
(Situated between W 74th St and W 75th St)
and via the Zoom Platform

PARKING OPTIONS: 357 W 71st St on [spothero.com](https://www.spotheo.com)

TRANSPORTATION: 72nd St Subway Station, 1, 2, 3, C or B subway trains

EXHIBIT SETUP/TEAR DOWN: 8:00 AM / 4:00 PM

DISPLAY TIMES: 8:30 AM to 5:00 PM

PAYMENT: EIN# 13-3813878

(Formerly Greater NY Chapter of the Nat'l Association of Professional Geriatric Care Managers)

*Payment must be issued to: New York Chapter of the Aging Life Care Association Inc.
Zelle payments made to: NYALCATreasurer@gmail.com*

Register AND pay by October 1st, 2021 to be listed as an "Initial Sponsor" on the NY ALCA chapter website. Online registration and payment only. Go to [Sponsor Registration link](#)

Cancellation Policy:

No refunds will be given, in-person may be converted to virtual sponsorship

Register Early: Sponsor space is limited and assigned on a first-come, first-served basis. No spaces can be held. Be sure to submit your completed online application, payment and insurance certificate (see below) early.

Confirmations: Confirmations will be sent within two business days of receiving your COMPLETED online application, payment and insurance certificate. Final details will be emailed approximately one week prior to the conference to the contact person listed.

Additional Information and Requirements

Two (2) REPRESENTATIVES ONLY are allowed to present for each company. ALL IN-PERSON SPONSORS MUST SHOW PROOF OF FULL VACCINATION BY OCTOBER 25TH 2021 TO ALCANYEVENTS@GMAIL.COM AND ONSITE THE DAY OF THE EVENT VIA [CROWDPASS](#). NO EXCEPTIONS. No partial day coverage/shared badges are available (no exceptions). No last minute, day-of exchanges accepted. Sponsors may switch to virtual tickets at any time prior to November 16th, 2021. Sponsors may receive continuing education credits only if they attend all four sessions, sign in prior to 8:30am, sign out after 4:30pm AND provide a completed evaluation form.

Exhibitor name badge changes may be made directly up until October 25th, 2021. Any changes after October 25th will incur a \$75 change fee.

Additional personnel from your company/organization may attend the conference as attendees at the early bird member rate of \$115 (if purchased prior to 10/25). See attendee registration for details.

Each onsite sponsor is allowed one (1) exhibit table. No electrical access is guaranteed.

Kosher meals must be ordered in advance by November 1st, 2021 to accommodate requests.

All onsite sponsors, as part of this event, must provide their own company insurance certificate with at least \$1million per occurrence, \$1million general aggregate and \$250,000 workers compensation if sending employees to exhibit.

Failure to submit an insurance certificate by October 25th, 2021 will result in the loss of in-person sponsorship status.

Sponsorship Terms and Conditions: The sponsor assumes the entire responsibility for losses, damages, and claims arising out of exhibit's activities on the conference premises and will indemnify, defend and hold harmless NYALCA, the site, their agents, and employees from any and all such losses, damages and claims.

Questions: Contact Leah Marie Lundrigan, NY ALCA Conference Planner (646) 645-9663 or alcanyevents@gmail.com

See our website: www.nyalca.org for conference updates.

Additional Information and Requirements

Please complete all sponsor and attendee registration and payment information online at www.nyalca.org. Attendee registration is non-transferable and non-refundable. In-person registration may be changed to Zoom registration.

Interested in registering additional personnel? As mentioned in NY ALCA Conference 2021 – Additional Information and Requirements, additional personnel from your company/organization may attend the conference as attendees at the early bird member rate of \$115 (if purchased prior to 10/25). See pricing below. Register additional personnel separately [here](#).

NO ONSITE REGISTRATION ALLOWED

	Early Bird (before 10/25)	Standard (10/25 to 11/12)
ALCA MEMBER	\$115	\$140
NON-MEMBER	\$125	\$150

- In-person registration includes continental breakfast and lunch
- Any in-person attendee tickets may be switched to a ZOOM ticket with no fee
- No refunds will be issued
- **ALL IN-PERSON ATTENDEES MUST SHOW PROOF OF FULL VACCINATION TO ALCANYEVENTS@GMAIL.COM ON DATE OF REGISTRATION AND BE PREPARED TO PRESENT IT ONSITE THE DAY OF THE EVENT. NO EXCEPTIONS.**
- All in-person attendance subject to change based on COVID guidelines and in-person tickets will be replaced with ZOOM tickets accordingly. No refunds.
- Financial hardship will be considered on a case-by-case basis. Please request application from alcanyevents@gmail.com. Must be submitted by October 6th, 2021 for consideration.